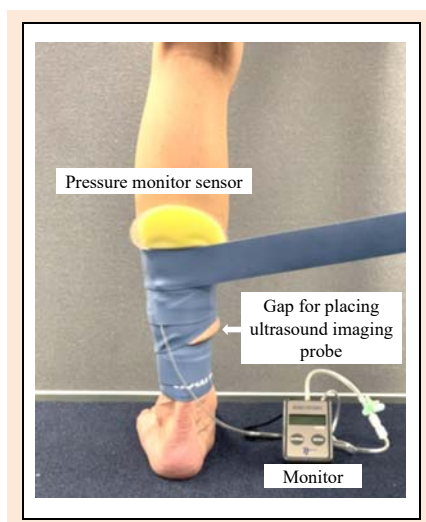


**Figure 2. Measurement and intervention flow.** WBLT and ankle joint torque measurements in the isokinetic dynamometer were performed in baseline measurements. One of the three bands was selected for the intervention. During the intervention, the pressure was monitored using the Kikuhime pressure monitor sensor, and the posterior tibial artery was monitored using ultrasound imaging. Outcome measurements were taken using the same methods as before the intervention. WBLT: weight-bearing lunge test; PF: plantar flexion; DF: dorsiflexion; sec: seconds; min: minutes.



**Figure 3. Illustration of wrapping tissue flossing and inserting pressure monitor sensor.** The floss band was wrapped around the non-dominant calf from just above the most prominent part of the medial ankle to the inferior border of the patella, extending 1.5 times the natural length and overlapping the bands by 50%. The Kikuhime pressure monitor sensor was placed at the largest bulge at the center of the posterior calf.

The Kikuhime pressure monitor sensor (ZiboCare® Kikuhime, TT Meditrade; ZiboCare, Horsens, Denmark) was placed at the largest bulge at the center of the posterior calf to measure the pressure (Figure 3). The Kikuhime pressure monitor sensor has good validity (intraclass correlation coefficient = 0.99, coefficient of variation [CV] = 1.1%) and reliability (CV = 4.9%) for studies on sports compression wear (Brophy-Williams et al., 2015). In this study, all the data regarding the means and standard deviations of compression force for the three conditions were 7.9

$\pm 2.0$ ,  $137.9 \pm 7.7$ , and  $162.8 \pm 11.3$  mmHg in the control, low-pressure and high-pressure conditions, respectively.

We observed the short axis of the posterior tibial artery using musculoskeletal ultrasound imaging mounted on an 11-MHz linear probe (SONIMAGE MX1 SNI BLE yb; KONICA MINOLTA, INC., Tokyo, Japan) (Figure 4). A previous study suggested that a high compression band of approximately 200 mmHg may cause complete occlusion of the arteries (Galis and Cooper, 2022). To prevent arterial occlusion, the myotendinous transition area of the gastrocnemius muscle was marked in advance with the size of the ultrasound imaging probe (5 cm [length]  $\times$  2 cm [width]), ensuring that the tissue flossing band did not cover this area.

### Baseline and Outcome Measurements Maximal isometric torque on ankle PF and DF

The maximal isometric torque on the ankle PF and DF were measured using an isokinetic dynamometer (Cybex Norm Testing & Rehabilitation System; Cybex Norm Int. Inc., Rosemont, IL, USA). Each participant's ankle joint was fixed using a belt while in a prone position with the knee extended, and they gripped handles on both sides to stabilize their trunk and buttocks. Maximal isometric contractions were performed once for 3 seconds after sufficient practice. The order of PF and DF at three ankle joint angles (neutral 0°, PF 20°, and DF 10°) was performed with a rest time of 10 seconds each.

### Ankle DF-ROM

The ankle DF-ROM was measured using the weight-bearing lunge test (WBLT) (Figure 5) (Bennell et al., 1998). The WBLT is a validated and reliable method for indirectly

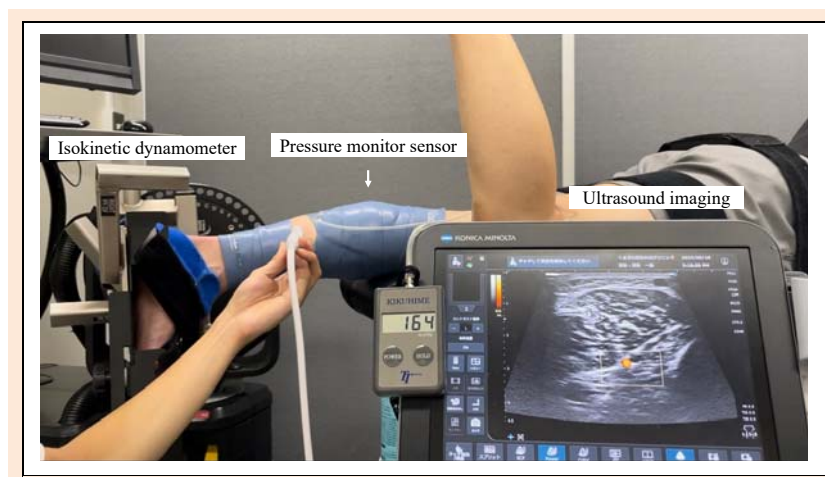
assessing ankle DF in the loading position (Bennell et al., 1998). The participants squatted maximally with their knees against a wall while keeping their heels on the floor. The examiner measured the distance from the floor to the knee (FK) and the distance from the wall to the heel (WH), and the ankle joint DF-ROM was calculated using the formula (Langarika-Rocafort et al., 2017): Leg inclination angle =  $\arctan (WH / FK)$ .

### Statistical analysis

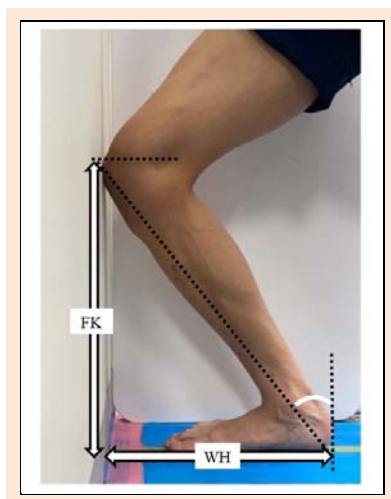
Sample size estimation was conducted using G\*Power software (version 3.1.9.2; University of Kiel, Kiel, Germany). A two-tailed test with a significance level of 0.05 estimated that 17 participants were required to achieve 80% power.

Continuous variables are presented as means and

standard errors of the mean, including 95% confidence intervals (CIs). Between-condition comparisons were performed using repeated-measures two-way analysis of variance with a mixed-effects model, considering two factors: intervention (three conditions) and time (before and after the intervention). Multiple comparisons were performed using Tukey's post-hoc test when significant differences were detected. Each test's effect size was calculated using Cohen's *d* statistic, with values of 0.2, 0.5, and 0.8 or greater were considered small, medium, and large, respectively. All statistical analyses were performed with EZR version 1.61 (Saitama Medical Center, Jichi Medical University, Saitama, Japan) (Kanda, 2013), a graphical user interface for R (The R Foundation for Statistical Computing, Vienna, Austria). Statistical significance was set at  $p < 0.05$ .



**Figure 4. Interventions with tissue flossing bands under conditions of ultrasound imaging observation and pressure measurement.** Observation of the short axis of the posterior tibial artery using musculoskeletal ultrasound imaging mounted the 11-MHz linear probe.



**Figure 5. Illustration of the WBLT.** FK: distance from the floor to the knee; WH: distance from the wall to the heel; WBLT: weight-bearing lunge test

## Results

Table 1 presents the results of the two factors (three band

conditions and time) on ankle joint PF and DF isometric torque, as well as ankle joint ROM.

Ankle joint PF torque showed a significant interaction at DF 10°; however, no interaction was observed at neutral 0° or PF 20°. Post-hoc tests revealed that, at DF 10°, both the low- and high-pressure band conditions significantly enhanced the ankle PF torque compared to the control condition ( $p = 0.02$  and  $p < 0.05$ , respectively); however, the effect sizes were trivial (0.14–0.15). No significant difference in ankle PF torque was found between the low- and high-pressure band conditions ( $p = 0.89$ ). In addition, there was no interaction regarding DF torque at any joint angle position (Table 1).

In the WBLT, a significant interaction was observed between the three band conditions and time (Table 1). In the post-hoc test, both the low- and high-pressure band conditions significantly enhanced the ankle DF-ROM compared to the control condition ( $p < 0.01$  and  $p = 0.02$ , respectively); however, the effect sizes were small (0.35–0.43). No significant difference was found between the low- and high-pressure band conditions in the WBLT ( $p = 0.53$ ). No short- or long-term adverse effects were reported after all interventions.

**Table 1. Changes in maximal isometric ankle joint torque and DF-ROM before and after the intervention, depending on the band intervention conditions.**

	Position	(a) control					(b) Low					(c) High					Interaction		Tukey
		Pre	Post	d	95% CI	ES	Pre	Post	d	95% CI	ES	Pre	Post	d	95% CI	ES	F-value	P-value	
PF (Nm)	at PF 20°	59.7 ± 3.8	56.2 ± 3.7	-3.5	-6.4 to -0.7	0.22	58.5 ± 3.9	58.1 ± 3.6	-0.5	-3.8 to 2.8	0.03	57.6 ± 3.6	58.7 ± 3.4	1.1	-6.4 to -0.7	0.07	2.40	0.10	
	at 0°	98.8 ± 6.4	94.9 ± 7.2	-3.8	-8.1 to -0.4	0.13	95.2 ± 6.4	97.3 ± 6.4	2.2	-2.1 to -6.4	0.08	94.6 ± 6.4	96.9 ± 6.4	2.4	-4.5 to 9.2	0.09	1.98	0.15	
	at DF 10°	105.3 ± 7.1	100.0 ± 7.9	-5.3	-11.2 to 0.6	0.16	99.7 ± 7.4	104.0 ± 7.1	4.3	0.6 to 8.0	0.14	98.3 ± 7.5	103.2 ± 7.9	4.9	-0.5 to 10.4	0.15	5.50	0.01*	a vs. b, c
DF (Nm)	at PF 20°	36.6 ± 1.5	35.7 ± 1.8	-0.9	-2.2 to 0.4	0.13	36.8 ± 1.6	36.4 ± 1.7	-0.4	-1.5 to 0.8	0.05	36.8 ± 1.8	35.5 ± 1.9	-1.3	-2.5 to 0.0	0.16	0.58	0.57	
	at 0°	33.8 ± 1.7	33.7 ± 1.8	-0.2	-1.0 to 0.6	0.02	35.2 ± 1.7	33.7 ± 1.6	-1.5	-3.1 to 0.0	0.22	33.1 ± 1.8	32.7 ± 1.7	-0.4	-1.9 to 1.1	0.06	1.31	0.28	
	at DF 10°	24.3 ± 1.7	23.7 ± 1.4	-0.5	-1.8 to 0.8	0.08	23.7 ± 1.5	23.2 ± 1.4	-0.5	-1.5 to 0.4	0.09	24.5 ± 1.5	25.6 ± 1.7	1.1	-1.2 to 3.3	0.16	1.46	0.24	
WBLT (°)		45.4 ± 0.9	45.6 ± 0.9	0.2	-0.5 to 0.8	0.04	44.3 ± 0.9	45.9 ± 0.9	1.7	0.8 to 2.5	0.43	44.9 ± 0.8	46.2 ± 0.9	1.3	0.7 to 1.9	0.35	5.59	0.01*	a vs. b, c

Continuous variables are presented as means and standard errors of the mean, CI: confidence interval; PF: Plantar flexion; DF: Dorsiflexion torque; WBLT: Weight-bearing lunge test; d: difference; ES: Effect Size; Tukey: Tukey's multiple comparison test. \* Interaction between bands at  $p < 0.05$  (two-way ANOVA). Significant differences in the post hoc analysis ( $p < 0.05$ ) per the intervention condition (Tukey's multiple comparison test).

## Discussion

From our findings, calf tissue flossing at two different pressures significantly increased PF torque in the DF 10° and DF-ROM compared to control conditions, although the effect sizes were trivial to small.

### Maximal Isometric Torque on Ankle PF and DF

We observed an interaction effect for PF torque at DF 10°. The low- and high-pressure band conditions enhanced the PF torque by up to 4.3% and 5.0%, respectively, whereas the control condition decreased it by 5.0%. A previous study using a high-pressure band for the calf found that the rate of force development of the PF at 0–50 ms was increased, but not the peak torque value (Kaneda et al., 2020a). The study's intervention method consisted of mobilization, such as passively twisting the calf with a band around it and calf stretching and PF exercises in the standing position. However, our intervention methods comprised only maximal isometric contractions in PF and DF positions. This difference in intervention methods may explain the disparities in effectiveness observed. While calf tissue flossing significantly increased PF torque in our study, the effect sizes were trivial; therefore, it was difficult to reach a conclusion regarding its effectiveness in improving PF torque. However, despite the 5% decrease in PF torque observed in the control condition, the tissue flossing conditions maintained or slightly increased PF torque. This suggests that calf tissue flossing may help mitigate fatigue-induced decreases in PF torque.

Tissue flossing, which uses more compression than is commonly used in blood flow restriction therapy, is thought to increase fascia sliding in addition to its blood flow restriction effect (Starrett and Cordoza, 2015). Some individuals may find the compression force too strong and painful because of the high-pressure band. Although there were no adverse effects following our interventions, previous studies involving calf tissue flossing reported several adverse effects regarding ROM and torque results using the high-pressure

band (200 mmHg) compared to the low-pressure band (150 mmHg) (Galis and Cooper, 2022). Some adverse events included severe pain, skin color changes, hematoma, and numbness in the shoulder (Wienke et al., 2020). Although limb muscle training with blood flow restriction is effective for increasing joint torque (Fahs et al., 2015; Scott et al., 2015; Takarada et al., 2002), strong compression forces can lead to adverse events (Loenneke et al., 2012; Yasuda et al., 2011). The low-pressure band used in this study ( $137.9 \pm 7.7$  mmHg) can moderately tighten the calf without painful sensations, making it suitable for a wide range of individuals.

In our study, no significant interactions were found between PF torque at PF 20° and neutral 0° or between DF torque in all ankle positions. Ankle joint torque is influenced by the muscle's length-force relationship (Gordon et al., 1966). The triceps surae muscles, which are shortened in the PF position, may have reduced contraction capacity compared to the DF position (Guimaraes et al., 1994). The greater PF torque observed in the DF position than in the other positions in our study supports this finding. Therefore, at PF 20° and neutral 0°, the lack of active contraction in the musculotendinous unit could explain the lack of significant effects. Another possible reason is fascial gliding related to changes in tissue viscosity. In the DF position, the triceps surae muscles are more stretched; this increases muscle stiffness and could lead to impaired fascial gliding (Murayama et al., 2012). Calf tissue flossing reduces muscle stiffness (Kaneda et al., 2020a), and the compression from the floss band applied to the calf muscles, where gliding was restricted in the DF position, may have influenced deeper tissue structures, promoted viscosity reduction, and improved fascial gliding (Behm et al., 2016). This could explain why the PF torque effect was more pronounced in the DF position. Regarding DF torque, we believe that because the dorsal muscles have less volume than the posterior calf muscles, they were not affected. These results showing no change in the calf band intervention would contribute to understanding the indications and benefits of calf banding.

## Ankle DF-ROM

In this study, calf tissue flossing significantly increased ankle joint DF-ROM by 1.7° and 1.3° in the low- and high-pressure conditions, respectively, while the control condition showed almost no change (0.2°). However, considering that the minimum detectable change for the WBLT is 4.7° (Powden et al., 2015), we concluded that the clinical effect of calf tissue flossing on DF-ROM was negligible. According to a scoping review, the mean change in DF-ROM across four studies involving calf tissue flossing was 20.0% (95% CI, 11.6–28.8%) (Konrad et al., 2021b). These studies typically used interventions that focused on stretching the calf tissue through repeated maximal PF and DF motions and passive twisting of the calf tissue. In contrast, we focused on enhancing ankle joint torque by several maximal voluntary isometric contractions using a compression band for the calf tissue, which may explain the limited effect on DF-ROM.

The exact mechanism by which compression bands improve ROM remains unclear. It is hypothesized that the compression band may influence the viscoelasticity of soft tissue and fascia gliding (Starrett and Cordoza, 2015). The fascia, innervated by mechanoreceptors, responds to stimulation of the compression band, potentially decreasing sympathetic tone (Schleip, 2003). In addition, a relationship with stretch tolerance has also been suggested (Konrad et al., 2021b). Increased DF ROM observed after ankle tissue flossing has been linked to stretch tolerance, with no changes in muscle stiffness (Vogrin et al., 2020). In contrast, calf tissue flossing, compared with static stretching, resulted in decreased muscle stiffness without changes in stretch tolerance (Kaneda et al., 2020a). Given that our study involved calf intervention, it is likely that the effect on muscle stiffness played a more significant role. A previous study found that a low-pressure band (150 mmHg) improved the DF-ROM, whereas a high-pressure band (200 mmHg) did not, indicating that excessive compression is ineffective for joint ROM because the arterial occlusion reduced the inflow of blood containing oxygen and vital nutrients to the muscles (Galis and Cooper, 2022). In our study, we observed no arterial occlusion under either compression band condition ( $137.9 \pm 7.7$  to  $162.8 \pm 11.3$  mmHg), which must have prevented any adverse effects. Still, further studies are needed to determine the optimal compression force and mechanisms underlying the effects of compression bands.

## Clinical Significance and Limitations

The main clinical implication of this study is that a brief calf tissue flossing session can immediately enhance PF torque without reducing DF-ROM, both of which are critical factors for preventing ankle injuries (Backman and Danielson, 2011; de Noronha et al., 2006; Fong et al., 2011). While commonly used techniques such as dynamic stretching and foam rolling have been suggested to produce similar effects (Su et al., 2017), recent studies indicate that tissue flossing may offer superior benefits. For instance, thigh tissue flossing has reportedly demonstrated greater improvements in eccentric torque and hamstring flexibility than has dynamic stretching (Kaneda et al., 2020b).

Although foam rolling has been reported to improve joint torque and flexibility (Su et al., 2017), a recent meta-analysis concluded that it does not significantly increase myofascial tissue compliance or isometric torque (Glänzel et al., 2023). The simple and quick tissue flossing intervention can be performed by any individual anywhere - as a warm-up before a game, during practice, or at half-time - making it accessible for individuals regardless of their sports setting or medical resources. This intervention technique can help prevent performance deterioration and lower limb disability.

This study had some limitations. First, the participants were all young adult males from a university sports club and did not include top-level competitive athletes or women. The effect of the compression band may vary based on different muscle masses and adipose tissues (Hirsch et al., 2016). Second, the intervention methods used in this study slightly modified the general recommendations to demonstrate only maximal voluntary isometric contractions. An additional focus on calf stretching, an effective intervention method for DF-ROM, would provide additional benefits (Starrett and Cordoza, 2015). Third, the influence of fatigue must also be considered. In muscle strength measurements, the sequence of measuring different angles was not randomized, and the rest period was limited to 10 seconds. Therefore, the possibility that fatigue influenced the measurement results cannot be excluded. Fourth, this study examined the immediate effect of tissue flossing on the calf; thus, the effect on durability or prevention of injury remains unknown. Therefore, further studies are required to address these aspects and confirm our findings.

## Conclusion

This study showed that a simple intervention using calf tissue flossing for a few minutes significantly enhanced ankle PF torque in the DF position and DF-ROM, although the effect sizes were trivial to small. Future studies should explore the long-term effects and potential for injury prevention of tissue flossing across diverse populations and conditions, as well as evaluate optimal compression parameters and the integration of complementary rehabilitation techniques.

## Acknowledgements

We thank the subjects and the study team for their participation in this study. The Japan Society supported this study for the Promotion of Science Grant-in-Aid (JSPS KAKENHI, Grant Number: JP22K11294). The experiments comply with the current laws of the country in which they were performed. We have a joint research agreement with Sanct Japan Co., Ltd. No research funding was received from Sanct Japan Co., Ltd, but the instructor (intervenor), the author and co-authors of this study, attended the sponsored seminar for free. The datasets generated during and/or analyzed during the current study are not publicly available but are available from the corresponding author who was an organizer of the study.

## References

- Anandacoomarasamy, A. and Barnsley, L. (2005) Long term outcomes of inversion ankle injuries. *British Journal of Sports Medicine* 39, 14-14. <https://doi.org/10.1136/bjsm.2004.011676>



- Backman, L.J. and Danielson, P. (2011) Low range of ankle dorsiflexion predisposes for patellar tendinopathy in junior elite basketball players: a 1-year prospective study. *The American Journal of Sports Medicine* **39**, 2626-2633. <https://doi.org/10.1177/0363546511420552>
- Behm, D.G., Blazevich, A.J., Kay, A.D. and McHugh, M. (2016) Acute effects of muscle stretching on physical performance, range of motion, and injury incidence in healthy active individuals: a systematic review. *Applied Physiology, Nutrition, and Metabolism* **41**, 1-11. <https://doi.org/10.1139/apnm-2015-0235>
- Bennell, K.L., Talbot, R.C., Wajswelner, H., Techovanich, W., Kelly, D.H. and Hall, A.J. (1998) Intra-rater and inter-rater reliability of a weight-bearing lunge measure of ankle dorsiflexion. *Australian Journal of Physiotherapy* **44**, 175-180. [https://doi.org/10.1016/S0004-9514\(14\)60377-9](https://doi.org/10.1016/S0004-9514(14)60377-9)
- Brophy-Williams, N., Driller, M.W., Shing, C.M., Fell, J.W. and Halson, S.L. (2015) Confounding compression: the effects of posture, sizing and garment type on measured interface pressure in sports compression clothing. *Journal of Sports Sciences* **33**, 1403-1410. <https://doi.org/10.1080/02640414.2014.990489>
- de Noronha, M., Refshauge, K.M., Herbert, R.D., Kilbreath, S.L. and Hertel, J. (2006) Do voluntary strength, proprioception, range of motion, or postural sway predict occurrence of lateral ankle sprain? *British Journal of Sports Medicine* **40**, 824-828. <https://doi.org/10.1136/bjsm.2006.029645>
- Driller, M., Mackay, K., Mills, B. and Tavares, F. (2017) Tissue flossing on ankle range of motion, jump and sprint performance: a follow-up study. *Physical Therapy in Sport* **28**, 29-33. <https://doi.org/10.1016/j.ptsp.2017.08.081>
- Ekstrand, J., Häggglund, M. and Waldén, M. (2011) Injury incidence and injury patterns in professional football: the UEFA injury study. *British Journal of Sports Medicine* **45**, 553-558. <https://doi.org/10.1136/bjsm.2009.060582>
- Fahs, C.A., Loenneke, J.P., Thiebaut, R.S., Rossow, L.M., Kim, D., Abe, T., Beck, T.W., Feeback, D.L., Bembem, D.A. and Bembem, M.G. (2015) Muscular adaptations to fatiguing exercise with and without blood flow restriction. *Clinical Physiology and Functional Imaging* **35**, 167-176. <https://doi.org/10.1111/cpf.12141>
- Fong, C.M., Blackburn, J.T., Norcross, M.F., McGrath, M. and Padua, D.A. (2011) Ankle-dorsiflexion range of motion and landing biomechanics. *Journal of Athletic Training* **46**, 5-10. <https://doi.org/10.4085/1062-6050-46.1.5>
- Galis, J. and Cooper, D.J. (2022) Application of a floss band at differing pressure levels: effects at the ankle joint. *The Journal of Strength & Conditioning Research* **36**, 2454-2460. <https://doi.org/10.1519/JSC.0000000000003833>
- Glänzel, M.H., Rodrigues, D.R., Petter, G.N., Pozzobon, D., Vaz, M.A. and Geremia, J.M. (2023) Foam Rolling Acute Effects on Myofascial Tissue Stiffness and Muscle Strength: A Systematic Review and Meta-Analysis. *Journal of Strength & Conditioning Research* **37**, 951-968. <https://doi.org/10.1519/JSC.0000000000004385>
- Gordon, A.M., Huxley, A.F. and Julian, F.J. (1966) The variation in isometric tension with sarcomere length in vertebrate muscle fibres. *The Journal of Physiology* **184**, 170-192. <https://doi.org/10.1113/jphysiol.1966.sp007909>
- Guimaraes, A.C., Herzog, W., Hulliger, M., Zhang, Y.T. and Day, S. (1994) Effects of muscle length on the EMG-force relationship of the cat soleus muscle studied using non-periodic stimulation of ventral root filaments. *Journal of Experimental Biology* **193**, 49-64. <https://doi.org/10.1242/jeb.193.1.49>
- Herzog, M.M., Kerr, Z.Y., Marshall, S.W. and Wikstrom, E.A. (2019) Epidemiology of ankle sprains and chronic ankle instability. *Journal of Athletic Training* **54**, 603-610. <https://doi.org/10.4085/1062-6050-447-17>
- Hirsch, K.R., Smith-Ryan, A.E., Trexler, E.T. and Roelofs, E.J. (2016) Body composition and muscle characteristics of division I track and field athletes. *The Journal of Strength & Conditioning Research* **30**, 1231-1238. <https://doi.org/10.1519/JSC.0000000000001203>
- Kanda, Y. (2013) Investigation of the freely available easy-to-use software 'EZ' for medical statistics. *Bone Marrow Transplant* **48**, 452-458. <https://doi.org/10.1038/bmt.2012.244>
- Kaneda, H., Takahira, N., Tsuda, K., Tozaki, K., Kudo, S., Takahashi, Y., Sasaki, S., Fukushima, K. and Kenmoku, T. (2020a). The effects of tissue flossing and static stretching on gastrocnemius exertion and flexibility. *Isokinetics and Exercise Science* **28**, 205-213. <https://doi.org/10.3233/IES-192235>
- Kaneda, H., Takahira, N., Tsuda, K., Tozaki, K., Kudo, S., Takahashi, Y., Sasaki, S. and Kenmoku, T. (2020b) Effects of tissue flossing and dynamic stretching on hamstring muscles function. *Journal of Sports Science and Medicine* **19**, 681-689. <https://pubmed.ncbi.nlm.nih.gov/33239941/>
- Konrad, A., Bernsteiner, D., Budini, F., Reiner, M.M., Glashüttner, C., Berger, C. and Tilp, M. (2021a) Tissue flossing of the thigh increases isometric strength acutely but has no effects on flexibility or jump height. *European Journal of Sport Science* **21**, 1648-1658. <https://doi.org/10.1080/17461391.2020.1853818>
- Konrad, A., Močnik, R. and Nakamura, M. (2021b) Effects of tissue flossing on the healthy and impaired musculoskeletal system: a scoping review. *Frontiers in Physiology* **12**, 666129. <https://doi.org/10.3389/fphys.2021.666129>
- Kucera, K.L., Marshall, S.W., Wolf, S.H., Padua, D.A., Cameron, K.L. and Beutler, A.I. (2016) Association of injury history and incident injury in cadet basic military training. *Medicine and Science in Sports and Exercise* **48**, 1053. <https://doi.org/10.1249/MSS.0000000000000872>
- Langarika-Rocafort, A., Empanaza, J.I., Aramendi, J.F., Castellano, J. and Calleja-González, J. (2017) Intra-rater reliability and agreement of various methods of measurement to assess dorsiflexion in the Weight Bearing Dorsiflexion Lunge Test (WBLT) among female athletes. *Physical Therapy in Sport* **23**, 37-44. <https://doi.org/10.1016/j.ptsp.2016.06.010>
- Loenneke, J.P., Wilson, J.M., Marin, P.J., Zourdos, M.C. and Bembem, M.G. (2012) Low intensity blood flow restriction training: a meta-analysis. *European Journal of Applied Physiology* **112**, 1849-1859. <https://doi.org/10.1007/s00421-011-2167-x>
- Murayama, M., Watanabe, K., Kato, R., Uchiyama, T. and Yoneda, T. (2012) Association of muscle hardness with muscle tension dynamics: a physiological property. *European Journal of Applied Physiology* **112**, 105-112. <https://doi.org/10.1007/s00421-011-1959-3>
- Powden, C.J., Hoch, J.M. and Hoch, M.C. (2015) Reliability and minimal detectable change of the weight-bearing lunge test: a systematic review. *Manual Therapy* **20**, 524-532. <https://doi.org/10.1016/j.math.2015.01.004>
- Prill, R., Schulz, R. and Michel, S. (2019) Tissue flossing: a new short-term compression therapy for reducing exercise-induced delayed-onset muscle soreness. A randomized, controlled and double-blind pilot crossover trial. *The Journal of Sports Medicine and Physical Fitness* **59**, 861-867. <https://doi.org/10.23736/S0022-4707.18.08701-7>
- Schleip, R. (2003) Fascial plasticity - a new neurobiological explanation: Part 1. *Journal of Bodywork and Movement Therapies* **7**, 11-19. [https://doi.org/10.1016/S1360-8592\(02\)00067-0](https://doi.org/10.1016/S1360-8592(02)00067-0)
- Scott, B.R., Loenneke, J.P., Slattery, K.M. and Dascombe, B.J. (2015) Exercise with blood flow restriction: an updated evidence-based approach for enhanced muscular development. *Sports Medicine* **45**, 313-325. <https://doi.org/10.1007/s40279-014-0288-1>
- Smith, R.W. and Reischl, S.F. (1986) Treatment of ankle sprains in young athletes. *The American Journal of Sports Medicine* **14**, 465-471. <https://doi.org/10.1177/036354658601400606>
- Starrett, K. and Cordoza G. (2015) *Becoming a supple leopard 2nd edition: the ultimate guide to resolving pain, preventing injury, and optimizing athletic performance.* Victory Belt Publishing, Las Vegas.
- Su, H., Chang, N.J., Wu, W.L., Guo, L.Y. and Chu, I.H. (2017) Acute Effects of Foam Rolling, Static Stretching, and Dynamic Stretching During Warm-ups on Muscular Flexibility and Strength in Young Adults. *Journal of Sport Rehabilitation* **26**, 469-477. <https://doi.org/10.1123/jsr.2016-0102>
- Takarada, Y., Sato, Y. and Ishii, N. (2002) Effects of resistance exercise combined with vascular occlusion on muscle function in athletes. *European Journal of Applied Physiology* **86**, 308-314. <https://doi.org/10.1007/s00421-001-0561-5>
- Vogrin, M., Novak, F., Licen, T., Greiner, N., Mikl, S. and Kalc, M. (2020) Acute Effects of Tissue Flossing on Ankle Range of Motion and Tensiomyography Parameters. *Journal of Sport Rehabilitation* **30**, 129-135. <https://doi.org/10.1123/jsr.2019-0160>
- Waterman, B.R., Owens, B.D., Davey, S., Zacchilli, M.A. and Belmont, P.J. (2010) The epidemiology of ankle sprains in the United States. *The Journal of Bone & Joint Surgery. American Volume*

92, 2279-2284. <https://doi.org/10.2106/JBJS.I.01537>

Wienke, A.K., Thiel, C. and Kopkow, C., (2020) Effekte von medical flossing bei patienten mit schulterbeschwerden—randomisierte kontrollierte pilotstudie. *Physioscience* **16**, 5-15. (In German). <https://doi.org/10.1055/a-1078-6882>

Yasuda, T., Ogasawara, R., Sakamaki, M., Bemben, M.G. and Abe, T. (2011) Relationship between limb and trunk muscle hypertrophy following high-intensity resistance training and blood flow-restricted low-intensity resistance training. *Clinical Physiology and Functional Imaging* **31**, 347-351. <https://doi.org/10.1111/j.1475-097X.2011.01022.x>

### Key points

- An acute bout of calf tissue flossing immediately inhibited the decrease in ankle plantar flexion torque and slightly enhanced it.
- The intervention had a minor effect on ankle dorsiflexion range of motion.
- The technique is quick and easy to perform, suitable for sports warm-ups and practice.
- No adverse effects or arterial occlusion were observed with either compression level.
- Further research is needed to explore long-term benefits, optimal compression levels, and effects on diverse populations.

### AUTHOR BIOGRAPHY



#### Yuto SANO

##### Employment

Physical Therapy for Sports and Musculoskeletal System, Kitasato University Graduate School of Medical Sciences, Sagamihara, Japan and Department of Rehabilitation, Yokohama Sports Medical Center, Yokohama, Japan

##### Degree

RPT

##### Research interests

Rehabilitation, Sports medicine

**E-mail:** [y.sano.pt@gmail.com](mailto:y.sano.pt@gmail.com)



#### Masashi KAWABATA

##### Employment

Kitasato University Graduate School of Medical Sciences and Kitasato University School of Allied Health Sciences, Sagamihara, Japan

##### Degree

PhD, RPT

##### Research interests

Sports medicine and science, Rehabilitation, Ultrasound imaging

**E-mail:** [mkawaba@kitasato-u.ac.jp](mailto:mkawaba@kitasato-u.ac.jp)



#### Keito NAKATANI

##### Employment

Department of Rehabilitation, IMS Tokyo Katsushika General Hospital, Katsushika, Japan

##### Degree

RPT

##### Research interests

Rehabilitation, Sports medicine

**E-mail:** [kei.rept@gmail.com](mailto:kei.rept@gmail.com)



#### Yuto UCHIDA

##### Employment

Physical Therapy for Sports and Musculoskeletal System, Kitasato University Graduate School of Medical Sciences, Sagamihara, Japan

##### Degree

MSc, RPT

##### Research interests

Rehabilitation, Sports medicine

**E-mail:** [y.uchida.kitasato@gmail.com](mailto:y.uchida.kitasato@gmail.com)



#### Yuto WATANABE

##### Employment

Physical Therapy for Sports and Musculoskeletal System, Kitasato University Graduate School of Medical Sciences, Sagamihara, Japan

##### Degree

MSc, RPT

##### Research interests

Rehabilitation, Sports medicine

**E-mail:** [yuto.w.87633@gmail.com](mailto:yuto.w.87633@gmail.com)



#### Yusuke TSUIHJI

##### Employment

Department of Rehabilitation, Keiyu Orthopaedic Hospital, Tatebayashi, Japan

##### Degree

MSc, RPT

##### Research interests

Rehabilitation, Sports medicine

**E-mail:** [tsuihiji.yusuke@gmail.com](mailto:tsuihiji.yusuke@gmail.com)



#### Daisuke ISHII

##### Employment

Department of Orthopedic Surgery, Funabashi Orthopedic Hospital, Funabashi, Japan

##### Degree

PhD, MD

##### Research interests

Sports medicine, musculoskeletal pain, motion analysis

**E-mail:** [mimihanapuku@gmail.com](mailto:mimihanapuku@gmail.com)



#### Tomonori KENMOKU

##### Employment

Department of Orthopaedic Surgery, Kitasato University School of Medicine, Sagamihara, Japan

##### Degree

PhD, MD

##### Research interests

Sports medicine, Musculoskeletal pain, Motion analysis

**E-mail:** [pseudolefty811@yahoo.co.jp](mailto:pseudolefty811@yahoo.co.jp)



#### Hiroyuki WATANABE

##### Employment

Kitasato University Graduate School of Medical Sciences and Kitasato University School of Allied Health Sciences, Sagamihara, Japan

##### Degree

PhD, RPT

##### Research interests

Rehabilitation, Sports medicine, Human Auxology

**E-mail:** [hw@ahs.kitasato-u.ac.jp](mailto:hw@ahs.kitasato-u.ac.jp)



**Naonobu TAKAHIRA****Employment**

Kitasato University Graduate School of Medical Sciences and Kitasato University School of Allied Health Sciences, Sagamihara, Japan

**Degree**

PhD, MD

**Research interests**

Hip surgery, Musculoskeletal rehabilitation, Sports medicine, Venous thromboembolism, etc.

**E-mail:** [takahira@med.kitasato-u.ac.jp](mailto:takahira@med.kitasato-u.ac.jp)

**✉ Masashi Kawabata, PhD, RPT**

Kitasato University Graduate School of Medical Sciences and Kitasato University School of Allied Health Sciences. 1-15-1 Kitazato, Minami-ku, Sagamihara, Kanagawa 252-0373, Japan